

TSF exhaust diffuser



TSF – a ceiling-mounted exhaust diffuser



Designed to fit directly into suspended ceilings.

Description

TSF is a ceiling-mounted exhaust diffuser with high flow capabilities and an appealing design. TSF is very suitable for suspended ceiling installations because of its flat design.

Ordering code

TSF-125
Dimensions

Accessories

Adapter plate for fitted in suspended ceilings, 600x600 and 625x625. Standard colour white (RAL 9010-80). The TSF in the 250, 315 and 400 sizes do not need adapter plates for 600x600 grids.

Ordering codes for adapter plates:

Sinus-P-600-125/160 (also fits to size 100)
Sinus-P-600-200
Sinus-P-625-125/160 (also fits to size 100)
Sinus-P-625-200
Sinus-P-625-250/315 (also fits to size 400)

Plenum box	PER
	With removable damper and test points

Function

TSF is an exhaust air diffuser designed for ceiling assembly. The front plate is removable for easy access to the duct. Size 250-400 is designed to fit directly into suspended ceilings with plate size 600x600. TSF size 100-200 and ceiling with plate size 625x625 requires a separate adapter plate (accessories).

For measuring and adjusting the airflow we recommend using the iris damper SPI.

Design

TSF consists of a perforated front plate and a diffuser box. The front plate is manufactured from sheet metal and the diffuser box from galvanized sheet metal. The front plate is fitted to the diffuser box with four spring latches.

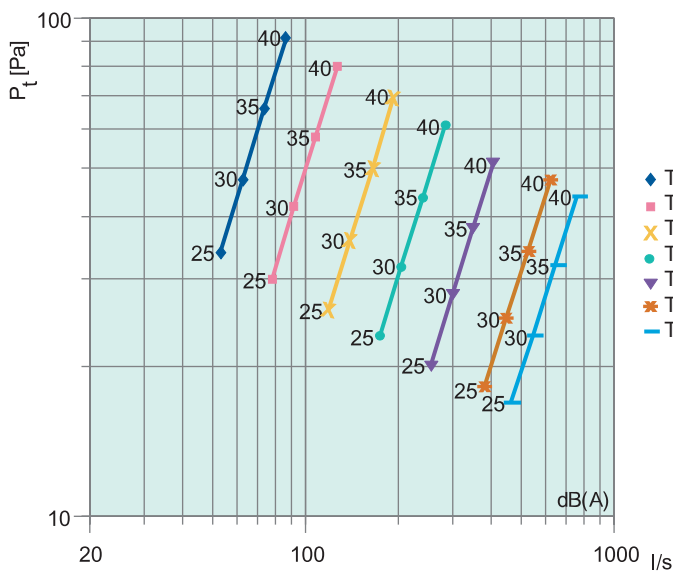
Diffuser box consists of a connection sleeve fitted with a rubber seal. The diffuser is painted with a white powder coated finish (RAL 9010-80).

Mounting

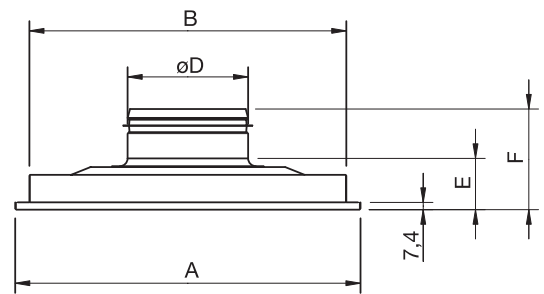
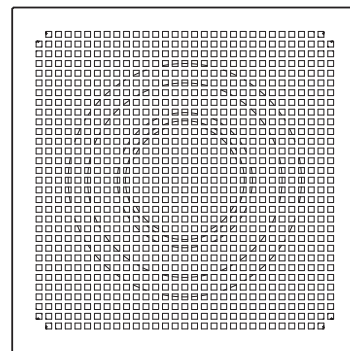
The TSF should be connected directly onto a duct (Ø100-400) with blind rivets. When being installed on a rigid ceiling structure, the sides and top of the diffuser box can be fitted to the structure. When being installed on a suspended ceiling, the Sinus adapter plate should be used (see Function).



TSF 100-400



- ◆ TSF-100
- TSF-125
- × TSF-160
- TSF-200
- ▼ TSF-250
- ★ TSF-315
- TSF-400



	A	B	ØD	E	F	Size of hole dimension
TSF 100	355	326	99	50	100	328 x 328
TSF 125	355	326	124	50	100	328 x 328
TSF 160	355	326	159	50	100	328 x 328
TSF 200	455	426	199	46	107	428 x 428
TSF 250	590	561	249	50	111	563 x 563
TSF 315	590	561	314	52	111	563 x 563
TSF 400	590	561	399	52	131	563 x 563



Systemair AB • SE-739 30 Skinnskatteberg, Sweden • Tel +46 222 44000 • Fax +46 222 44099

www.systemair.com